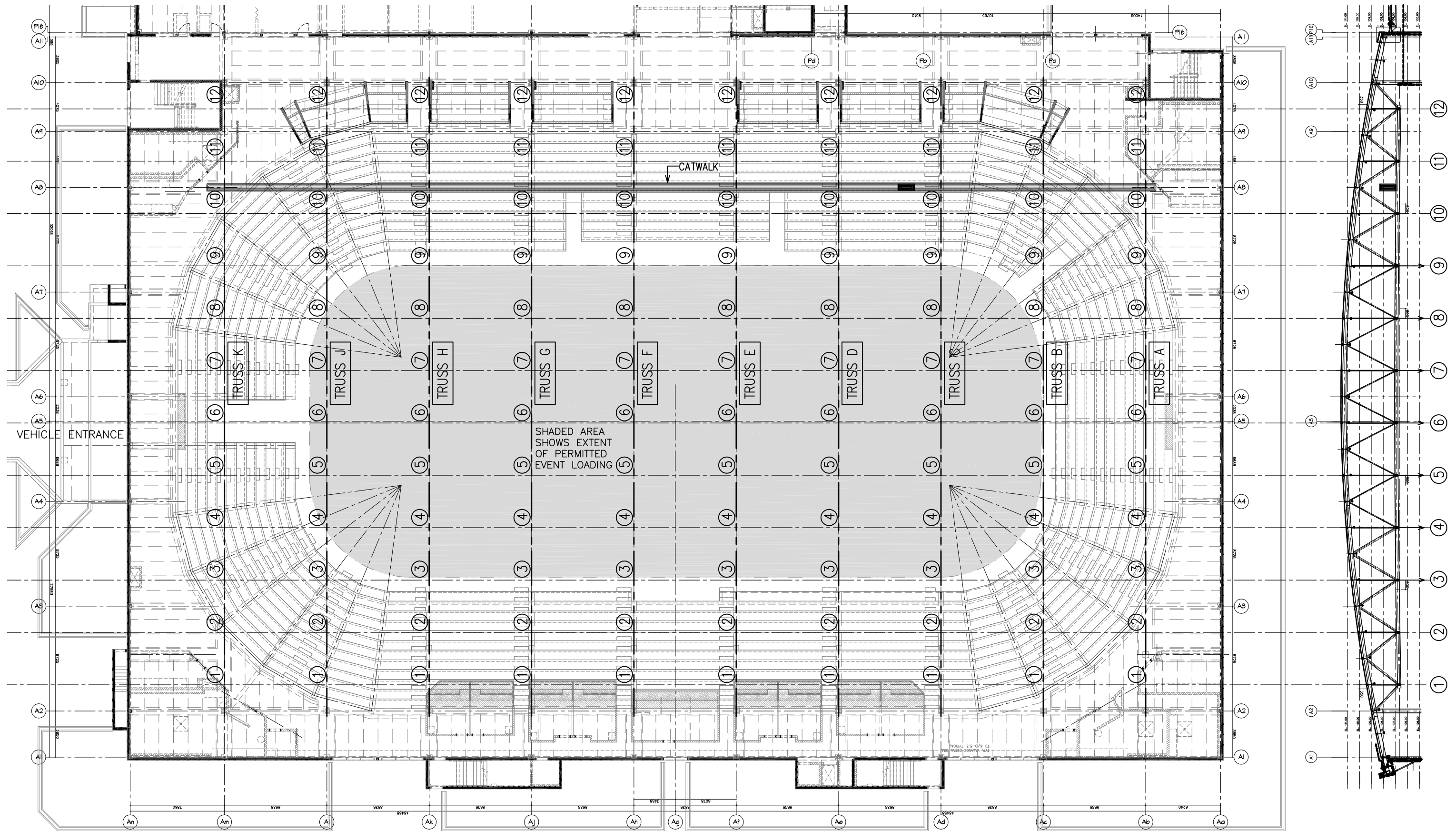


W:\204000\VIC.020460-0009 Cranbrook Rec Centre - Load Review\VIC.020460.0009 SK1-Key Seating Plan.dwg, 2/11/2009 10:57:10 AM, User:364, 1:1



### SEATING & TRUSS OVERLAY KEY PLAN

SCALE N.T.S.



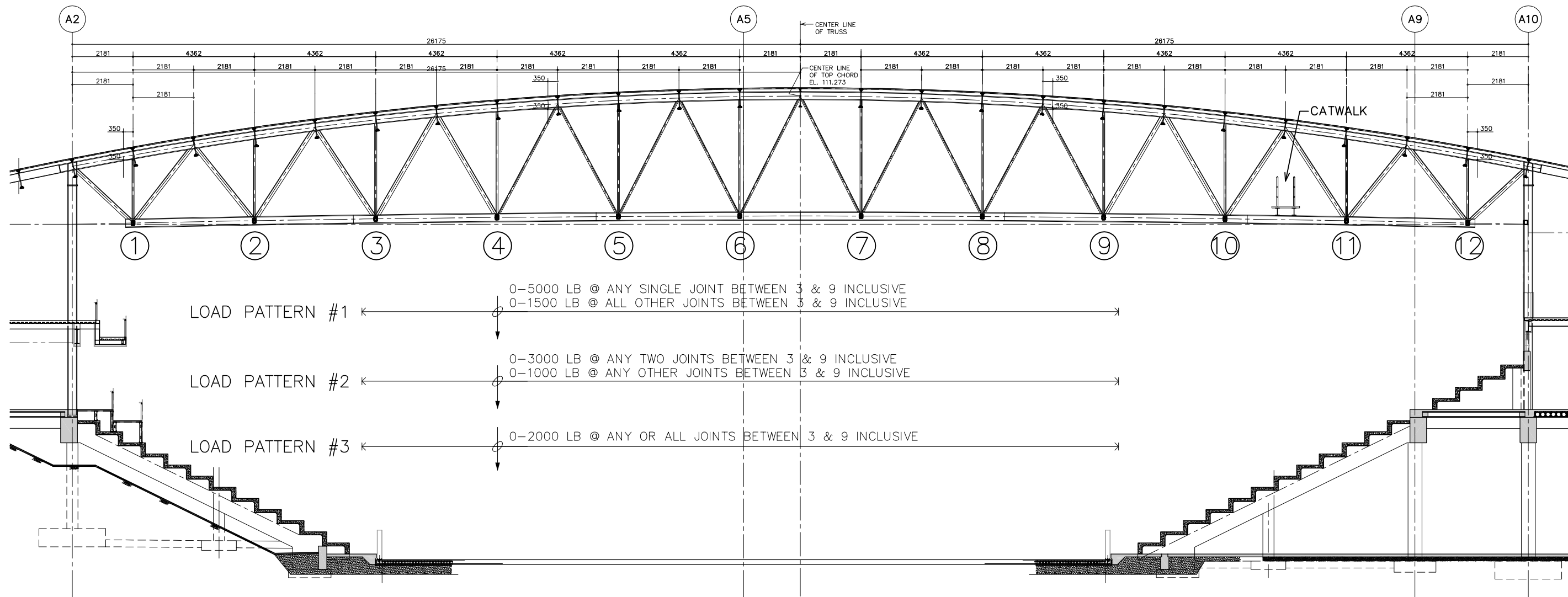
**Read Jones Christoffersen**  
Consulting Engineers

Vancouver • Victoria • Nanaimo • Calgary • Edmonton • Toronto  
Suite 220, 645 Tye Road, Victoria, BC V9A 6X5 Canada  
Office 250 386-7794 Fax 250 381-7900 www.rjc.ca

### CRANBROOK RECREATION CENTRE - LOAD REVIEW PERMITTED EVENT LOADING ON ROOF TRUSSES

#### KEY PLAN

|       |               |                 |               |      |
|-------|---------------|-----------------|---------------|------|
| Scale | Date          | Project No.     | Sketch Number | Rev. |
| N.T.S | FEB. 11, 2009 | VIC.020460.0009 | <b>SK1</b>    |      |



**NOTES:**

1. EVENT LOADING PERMITTED ONLY AT BOTTOM CHORD PANEL POINTS BETWEEN JOINTS 3 AND 9 INCLUSIVE.
2. DO NOT LOAD BOTTOM CHORD BETWEEN PANEL POINTS.
3. BRIDLE LOADS BETWEEN TRUSSES AT PANEL POINTS.
4. PERMITTED LOADS INCLUDE WEIGHT OF SUSPENSION HARDWARE AND ACCESSORIES AS WELL AS WEIGHT OF SUSPENDED ITEMS.
5. CONTACT READ JONES CHRISTOFFERSEN FOR HEAVIER LOADING, FOR LOADING CONDITIONS NOT COVERED ABOVE OR FOR LOADING OUTSIDE PERMITTED EVENT LOADING AREA.

**ARENA ROOF TRUSS ELEVATION (LOOKING WEST)**

SCALE N.T.S.



**Read Jones Christoffersen**  
Consulting Engineers

Vancouver • Victoria • Nanaimo • Calgary • Edmonton • Toronto  
Suite 220, 645 Tye Road, Victoria, BC V9A 6X5 Canada  
Office 250 386-7794 Fax 250 381-7900 www.rjc.ca

**CRANBROOK RECREATION CENTRE - LOAD REVIEW**  
**PERMITTED EVENT LOADING ON ROOF TRUSSES**

**TRUSS ELEVATION - LOAD PATTERNS**

| Scale | Date          | Project No.     | Sketch Number | Rev. |
|-------|---------------|-----------------|---------------|------|
| N.T.S | FEB. 11, 2009 | VIC.020460.0009 | SK2           | .    |